

Safer Stockton Partnership Crime & Disorder

August 2013



Since 2009/10, crime
has reduced
by 5.7%

Since 2009/10, Criminal
Damage has reduced
by 21.3%

Since 2009/10, public
reported violence
has reduced
by 8.4%

Win an Ipad Mini or £100 shopping voucher of your choice!
Don't delay –have your say!!

Prize draw donated by **Tristarhomes**

Visit our website www.saferstockton.com

Awating
QR Code

Fact

Over the past 10 years, total crime in the Borough has reduced by 42%, that's 8,105 fewer victims of crime.

This is the sixth Crime and Disorder magazine produced by the Safer Stockton Partnership (SSP). It is our main consultation that we carry out every three years to identify the key concerns of residents. Funding for the production and the delivery of the magazine comes from the partners on SSP and it's delivered to every door in the Borough. This is your opportunity to have your say on what our priorities should be for the next three years. We value your views and we use this information to guide our work over the next three years with the aim of continuing to reduce crime and anti-social behaviour in your community. Since the last consultation was carried out we have seen some significant results both in terms of continued reductions in crime and anti-social behaviour as well as the appointment of Cleveland's first Police and Crime Commissioner, Barry Copping. We have included further information on the Police and Crime Commissioner on this page.

Did you know?

Over the past 10 years, house burglary has reduced by 77%, that's 1773 fewer households targeted.

During August to October we will carry out extensive consultation with residents so look out for us and as well as having your chance to tell us what is most important you could also win a prize.

One aim of this magazine is to inform residents of how we have performed over the last three years. We have included a summary this time round which can be seen on pages 5 -7 with more detail on each category later in the magazine. We hope that after you have read this magazine you will have a better understanding of the work of the Safer Stockton Partnership and what we do on your behalf to make Stockton the safest place in the Tees Valley.

10 things you need to know about the Police & Crime Commissioner for Cleveland

- 1. Is a legally elected person who is responsible for the way in which the police in Cleveland
- 2. Ensures that the police force is efficient and effective.
- 3. Appoints, and if necessary dismisses the Chief Constable.
- 4. Holds the Chief Constable account for the operational delivery of policing.
- 5. Sets the strategic direction and objectives for policing by producing a Police and Crime Plan.
- 6. Sets the annual police budget, including the policing element of the Council Tax.
- 7. Produces an annual report setting out progress against the objectives in the Police and Crime Plan.
- 8. Cooperates with other criminal justice agencies across the area.
- 9. Works with partners and funds community safety activities to tackle crime and disorder.
- 10. Contributes to national and international policing requirements.

Since we conducted our last audit in 2010 crime figures in Stockton Borough have continued to produce some encouraging results. In the financial year 2012-2013 publicly recorded crime fell by 4.2%. Our recorded crime is consistently lower than the national average and the borough remains the safest place in the Tees Valley.

While reducing budgets in the public sector

are bringing significant challenges to the work of the partnership you will see when you read some of the examples of our successful work carried out by our members that we continue to have strong community support. Please take a few minutes to complete and return the audit form to tell us what areas of crime and disorder you think we should focus on. Your views are very important to our work”
Geoff Lee Chair of Safer Stockton Partnership

Introduction

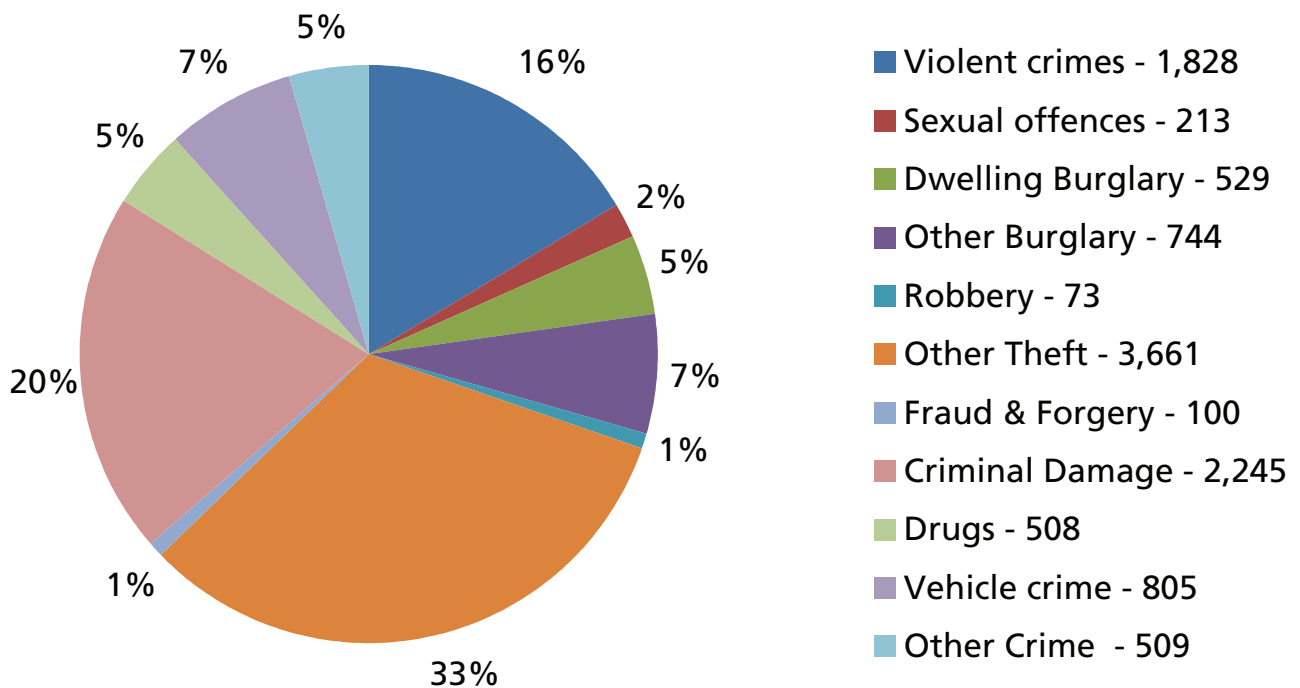
Stockton continues to be the safest place to live in the Tees Valley area!

There were 11,215 crimes recorded in 2012/13, a reduction of 5.6% over the last three years. That's 671 fewer victims of crime.

The pie chart shows that the majority of crime is made up of Other Theft offences, which also includes shoplifting and metal thefts, followed by Criminal Damage and violence. This is a similar picture to the past three years, but there are still challenges ahead with Other Theft offences having increased in the 12 months, in particular shoplifting.

Pic 2

Breakdown of crime categories 2012/13



Fact

The population of Stockton Borough has increased by 4% over the past 10 years, however during this time, crime in Stockton has reduced by 42%?

Summary of Partnership Performance

You Said – We Listened – We Did!

In the summer of 2010 we carried out the same consultation exercise as this one and more than 5,000 respondents told us what really mattered to them and what SSP should prioritise to make our borough an even safer place.

- Anti-Social Behaviour
- Alcohol related crime/anti-social behaviour
- Violent crime
- Drug related offending
- Criminal Damage

Reduce Anti Social Behaviour

We maintained our approach of using prevention, support and enforcement to tackle this issue.

Over the last three years we have been contacted for help over 21,900 times, this now includes any noise related asb, we have:

- issued 118 warning letters,
- 54 Acceptable Behaviour Contracts (ABC's) and
- obtained 35 ASBOs/CRASBOs.

We work in schools to educate young people on the consequences of anti-social behaviour. We carry out a range of initiatives in schools such as our successful 'Roach' campaign which highlights the key issues of ASB in a creative and interactive way. We also deliver lessons aimed at addressing risk taking behaviour, alcohol awareness as well as exploring the elements of Hate Crime. For more information contact Claire Sills (01642) 527616 communitysafety@stockton.gov.uk

Findings from the 2012 National residents Survey highlighted that 91% of residents in

Stockton felt safe outside the home during the day and 63% of residents felt safe outside of the home during the evening. In addition to this of those residents who have contacted the Councils Community Safety team in the last financial year 94% of residents were satisfied with the service and 96% had the confidence to use the service again.



Reduce alcohol related crime and anti social behaviour

Alcohol related ASB remains a key priority for the Safer Stockton Partnership. The Anti-social Behaviour Team and Neighbourhood Enforcement Service carry out regular patrols across the various wards in Stockton interacting with residents and local businesses to identify areas of concern. Officers proactively move on large groups of individuals who are causing problems in the local area as well as confiscate alcohol from individuals who are drinking underage. The Police have the power to issue a

Section 27 Direction to Leave Notice to any individual who they believe to be causing or at risk of causing alcohol related ASB. A Section 27 Notice requires the individual to leave the area for a period of 48 hours; failure to comply with this will result in arrest. Over the last 3 years 1,169 Section 27 notices have been issued in Stockton.

Did you know?

Detection rates have maintained a steady level over the last 3 years with 36.8% of all crime being detected.

Reducing Violence

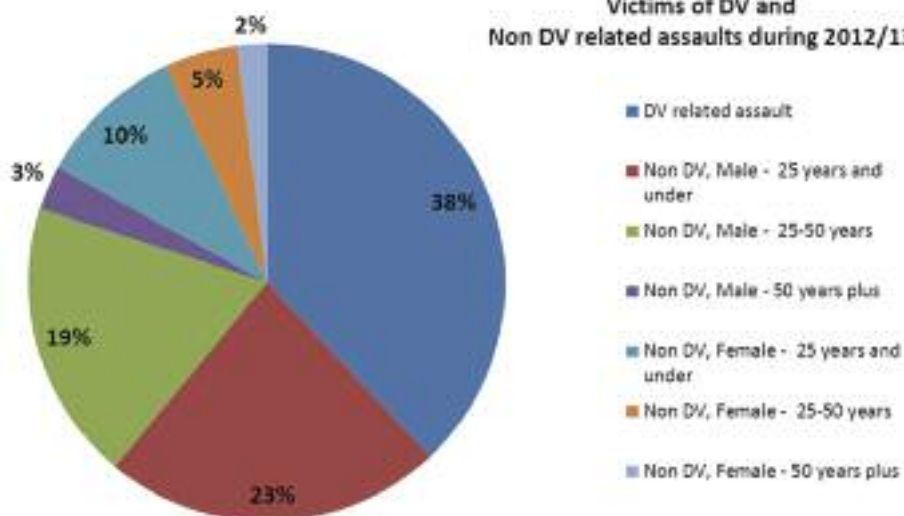
Over the last 5 years violence has reduced by 22% across Stockton. The most common type of violence is assault with injury. During the 2012/13 38% of all assaults with injury were domestic related. Adult males aged 25 years and under are the most likely victims of non-domestic related violence. Detailed below is a chart which provides the full breakdown for 2012/13

The Violence Tactical group meets regularly to analyse police data and identify emerging

trends, the group also has access to A and E data which provides up to date information on the number of admissions for treatment as well as intelligence relating to where incidents occurred. This information can be used to assist with the planning of resources as well as reviews and inspections of licensed premises.

Did you know?

Police related ASB incidents have reduced by 19% in the last year.



Fact

Any landlord can join the Landlord Liaison Scheme for free even if you have one property or a hundred and one!

Fact

Of the 18,825 10-17 years olds on our Borough, 98% of them are not involved in Crime!

Reduce Drug Related Offending

Within the borough there are a range of initiatives in place to assist with tackling drug related offending. The Stockton Integrated Offender Manager project provides intensive support to problematic drug users working with partners and treatment providers with the aim of reducing the risk of reoffending. Drug related offending is taken seriously and there are significant consequences for those who continue to commit crime. We have run a number of successful operations to tackle dealers in Stockton, Christopher Rogers was convicted of x2 conspiracies to supply Class A drugs and was sentenced to ten years in prison. Rogers was also given a confiscation order of, £275,703 with available assets of £91,528.

Reduce Criminal Damage

Over the last 5 years criminal damage has reduced by 38%! Criminal damage is hard to detect as incidents often occur during the night or in areas when there are not many people about. The most common type of criminal damage is damage to vehicles closely followed by damage to houses. Criminal Damage is monitored on a monthly basis and we use analysis to identify hotspot areas as well as identify repeat locations and victims of criminal damage. This information allows us to use our resources more effectively to target high risk areas at peak times. This approach has led to significant reductions, in 2012/13 Stockton had the lowest rate for criminal damage in Teesside with a rate of 11.70 incidents per 1,000 population.

Did you know?

Awaiting Text

Emerging Issues

SSP also chose Emerging Issues as a theme and we have used monthly Tasking and Coordinating meetings and the Partnership Strategic Assessment to identify which crime type we need to focus on, based on intelligence and reported crime and anti social behaviour. Other Theft has remained the key priority within this category but the specific types of crime within that category have changed between theft of metals and Shoplifting. We have also focussed on providing reassurance and in line with national policy Preventing Violent Extremism. We set targets for each priority which are monitored by SSP, every quarter and refreshed yearly. Performance monitoring papers can be viewed on www.saferstockton.com

Pic 3

What the Data tells us

Understanding crime and ASB data

Every year the Home Office publishes crime statistics for England and Wales collected from two sources; Police recorded crime statistics and the face to face British Crime Survey (BCS). In 2008 the Government also introduced the Place Survey which is a postal and telephone survey asking people to report their perceptions of crime, anti social behaviour and drug and alcohol related crime.

SSP also collect partnership data from monthly Tasking and Coordinating meetings and the Partnership Strategic Assessment (PSA) to identify which areas suffer the highest levels of crime and anti social behaviour and where our residents feel most unsafe.

The Home Office measures our performance against other Crime and Disorder Reduction Partnerships (CDRP) and Basic Command Units (BCU).

The council use Ipsos MORI to consult with residents and in this survey we ask whether residents have been a victim of crime. We can then compare this with the results of the BCS and this tells us Stockton residents are more likely to report being a victim of crime than the national average. So we know by using all of this data, we are getting an accurate picture of crime in our area.

Awaiting Graph

Crime Comparison over the last five years

Recorded Crime	2008/09	2000/10	2010/11	2011/12	2012/13	change	%change
Violence	2738	2324	2058	2076	2139	-599	-22
Robbery	107	53	73	71	73	-34	-32
Sexual Offences	178	169	156	214	214	36	20
Dwelling burglary	752	597	497	584	529	-223	-30
Other burglary	915	727	683	791	744	-171	-19
Theft of a motor vehicle	418	328	217	264	202	-216	-52
Theft from a motor vehicle	660	521	445	601	544	-116	-18
Vehicle interference	91	90	107	69	59	-32	-35
Other Theft	3773	2995	3348	3568	3550	-223	-6
Criminal Damage	3622	2855	2323	2472	2257	-1365	-38
Forgery&Fraud	301	247	200	278	243	-58	-19
Drugs	712	754	547	553	508	-204	-29
Other Crime	203	226	178	127	153	-50	-25
TOTAL CRIME	14470	11886	10832	11668	11215	-3255	-22

Over this time the number of sexual offences has increased. This includes the reporting of historical offences due to victims being more prepared to come forward to report incidents.

Overall crime has reduced by 22% over the five year period, this is 3,255 fewer victims of crime.

There have been excellent reductions in nearly all categories of crime:

- Dwelling burglary (down by 30%)
- Violence (down by 22%)
- Criminal Damage (down by 38%)

Burglary Fact

Did you know that during 2012/13 there were only 10 burglaries a week in Stockton. This compares to 15 burglaries five years ago and an overall reduction of 223 burglaries since 2009.



302930
Cuppa with a copper

To find out when your next Cuppa with a Copper session takes place please visit the your neighbourhood page on www.cleveland.police.uk or call the Neighbourhood Policing line on 01642 302930




Fact

There are four Local Area Partnership Boards in Stockton and a representative from each sits on the Safer Stockton Partnership.

Community Partnerships and Residents' Associations feed into the Boards, who underpin the Local Strategic Partnership process.

The Area Partnership Boards bring together representatives from the voluntary and community sector, local business, local agencies and resident's associations to give local people a chance to influence services provided within their area.

There are four Area Partnership Boards in Stockton Renaissance:

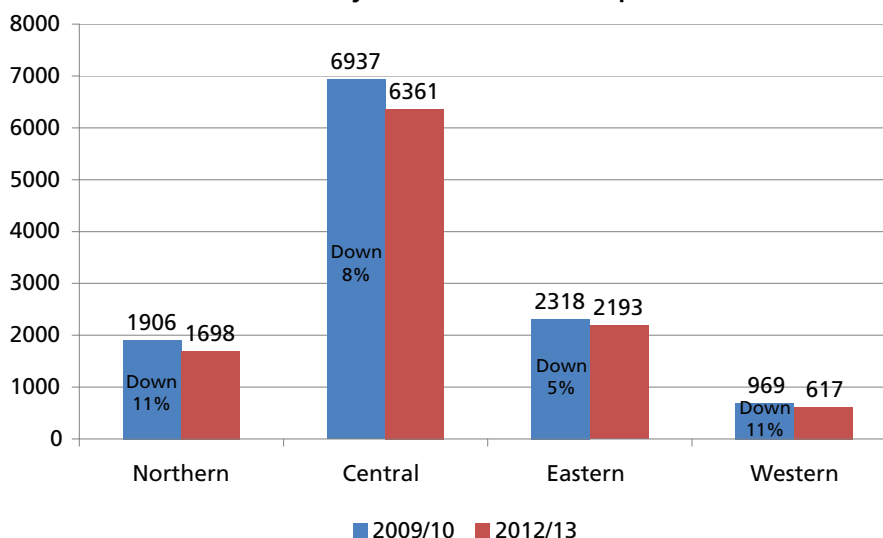
- **Central Area Partnership Board** covering the areas of Hardwick, Bishopsgarth and Elm Tree, Fairfield, Hartburn, Grangefield, Parkfield and Oxbridge, Stockton Town Centre, Norton and surrounding villages.
- **Eastern Area Partnership Board** covering the areas of Thornaby, Ingleby Barwick, Hilton, Maltby and surrounding villages.
- **Northern Area Partnership Board** covering the areas of Billingham, Wynyard, Wolviston and outlying areas.
- **Western Area Partnership Board** covering the areas of Yarm, Eaglescliffe, Kirklevington, Long Newtown, Elton and surrounding villages.

Area Partnerships Boards

Area Partnership Boards have an important role to play within the Local Strategic Partnership process.



Crime by Local Area Partnership 2012/13



Crime in your area

How do we compare?

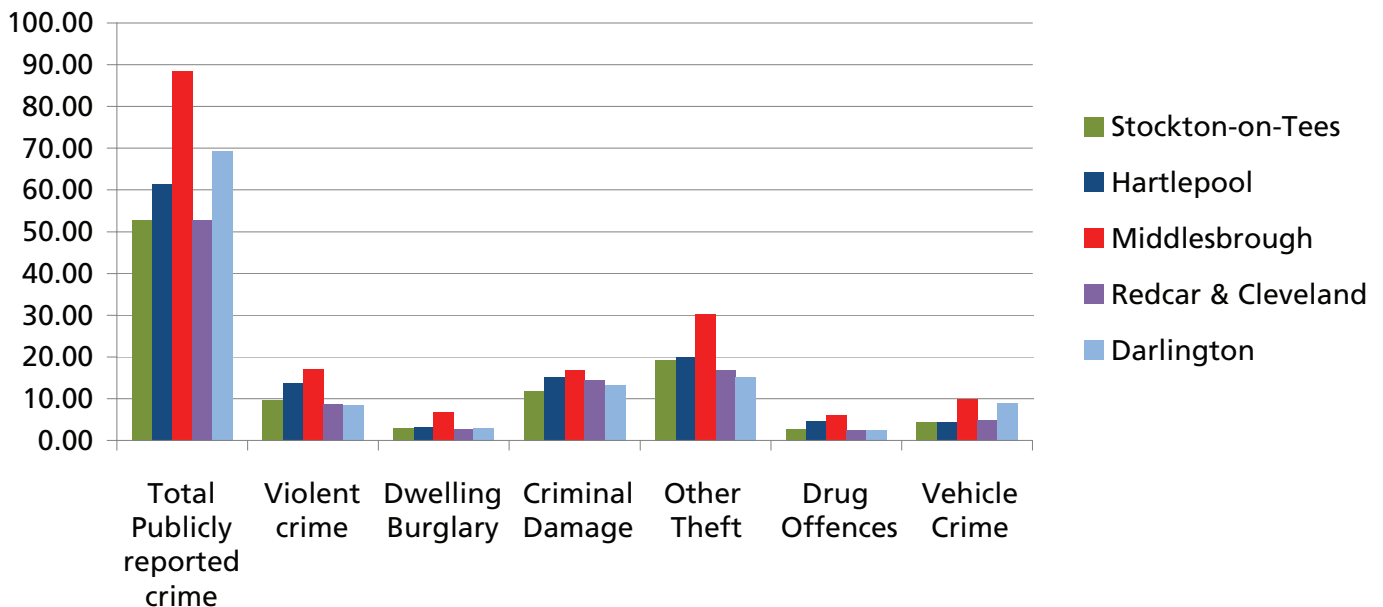
When compared for total crime we are ranked 6th in a group of similar CDRPs and 5th in our group for similar BCUs, which means we are significantly better than average in both groups.

We also compare favourably when measured against our neighbours and we are the safest place in the Tees Valley for the third year running.

Did you know?

Stockton has the largest population in the Tees Valley. Of the 663,000 residents, nearly 30% (191,800) live in the Stockton-On-Tees Borough, yet Stockton continues to be the safest place to live for public reported crime.

Crime rates across the Tees Valley 2012/13



Fact

We have the lowest rate in the Tees Valley area for total public reported crime, dwelling burglary, criminal damage and vehicle crime.

Awaiting Graph

The Town Centre Effect

We know that some town centres have higher levels of certain types of crime and anti social behaviour because they attract more people due to the concentration of shops and leisure facilities within them. We can see this particularly in Stockton Town Centre ward which is the biggest of our town centres.

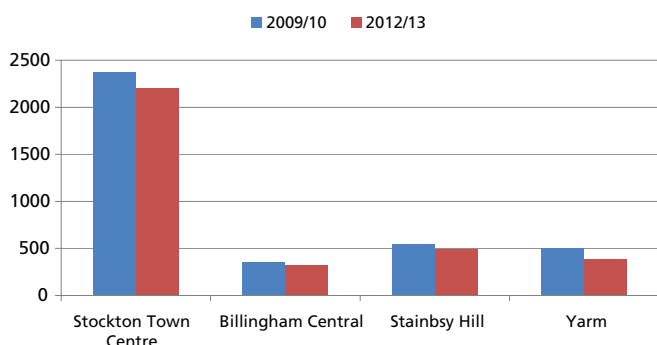
Wards covering Town Centre areas	3 year change
Stockton Town Centre	-7.0
Billingham Central	-8.9
Stainsby Hill	-10.1
Yarm	-22.7

This table shows that crime has reduced in all of the four town centre ward areas

Did you know?

To identify which ward you live in you can visit Crime in Your Area on www.saferstockton.com or phone 01642 527616.

Crime levels relating to wards covering Town Centre areas



Thornaby Town Centre



Stockton Town Centre



Yarm Town Centre



Billingham Town Centre

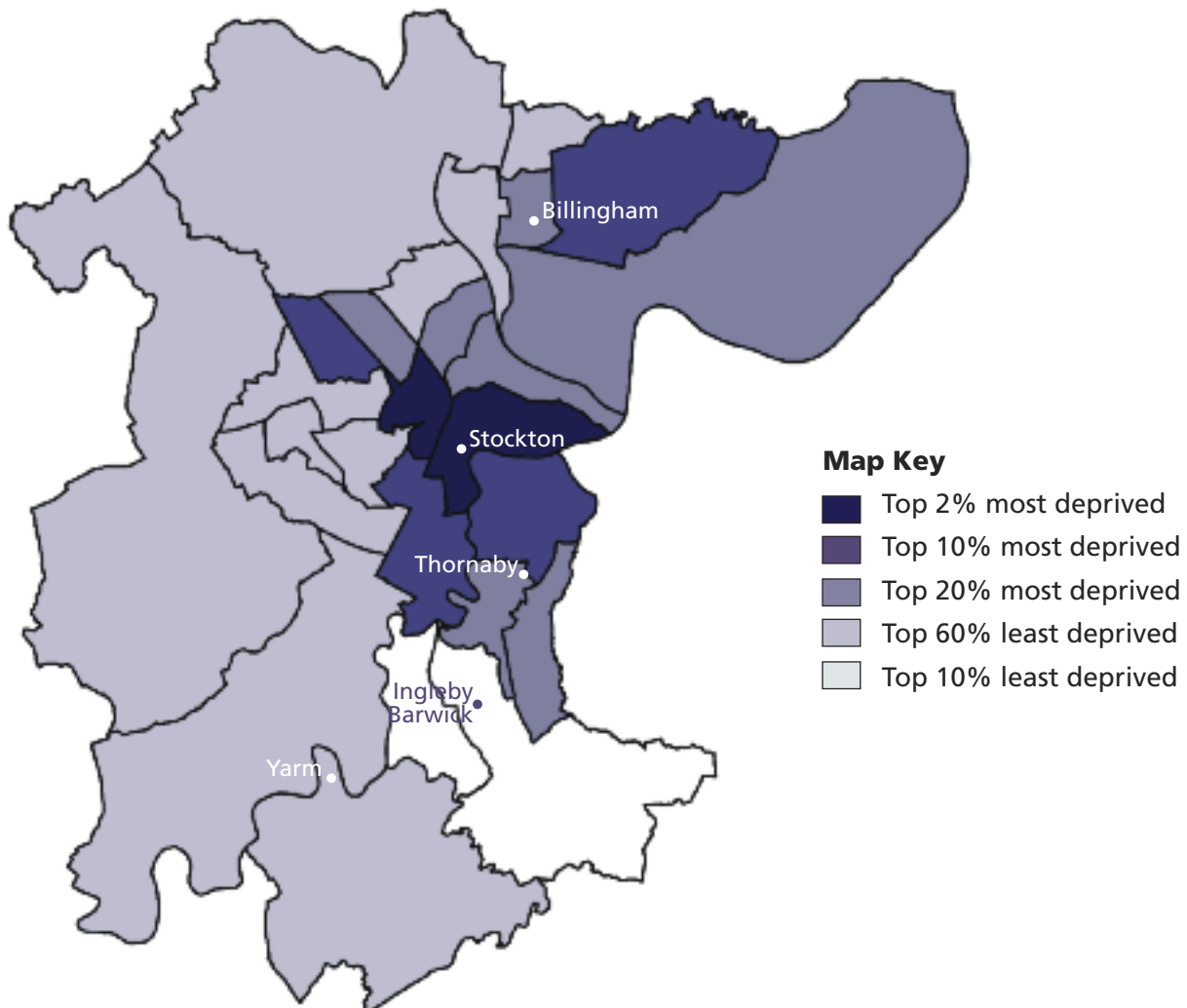
Fact

We have three wards in the top 5% most deprived wards nationally, a further three wards in the top 10% most deprived wards, and another seven wards in the top 20% most deprived wards. There are also two wards in the top 10% least deprived wards nationally.

How does Crime Relate to Other Problems

It is important to understand the correlation between crime, ASB and deprivation. Each ward in England and Wales is ranked out of 7,934, with one being the most deprived. A rank for

the local authority, based upon the average deprivation scores, is also published; Stockton is ranked 107 out of 354 in the country.



According to the Index of Multiple Deprivation (IMD) 2010, Stockton-On-Tees is ranked 107 out of the 354 local authorities districts in England; and thus Stockton-On-Tees is within the thirty-five per cent most deprived districts nationally. However within Stockton-On-Tees there is a unique social and economic mix, with areas of quite acute disadvantage situated alongside significant affluence. Whilst twenty-nine per cent of the population live within the top twenty per cent of least deprived areas of England, twenty-seven per cent live in the twenty per cent most deprived areas.

Working with those who Commit Crime

In April 2010 the Safer Stockton Partnership adopted the Integrated Offender Management Programme (IOM). IOM has provided the opportunity to target those offenders of most concern in a structured and coordinated way. Building upon the analysis of crime and offending problems within our area IOM helps to support coherent joint working across partnership agencies making the best use of local resources. Local IOM arrangements have recognised of the significant contribution both the Prolific and Priority Offender (PPO) scheme and Drug Interventions Programme (DIP) have made and these successful approaches have been embedded into the local IOM arrangements

The Stockton-On-Tees IOM Scheme has created a partnership with all appropriate service providers, including engagement with the Local Authority Community Safety team and Housing provision, Drugs and Alcohol Action Team (DAAT), Drug Interventions Team, Police, Probation, Health, Crown Prosecution Service, Youth Offending Team, Her Majesty's Courts Service and Her Majesty's Prison Service together with other statutory and voluntary agencies - ensuring closer working relationships and integration of services. Over the last 3 years the project has seen a 52% reduction in offending by PPOs.

IOM Case study

Mark was identified as a Stockton PPO on 1st March 2010, he has 19 convictions for 103 offences committed between 1988 and 2010, 60 of these are for theft and kindred offences. Notably commencing offending at the age of 13years, Mark's criminal activity escalated from Theft to Burglary which in the main were non-dwelling/Commercial properties.

Mark was released from his custodial sentence in December 2009 and subsequently nominated as a Prolific Offender in March 2010. During the six months Mark was in the Community the PPO team engaged with Mark and he took part in building over seventy garden benches which were distributed throughout the Stockton Borough to Care Homes for the elderly.

Unfortunately Mark returned to the Criminal Justice system committing an offence of burglary whilst under the influence of illicit drugs namely a concoction of tablets in July 2010 and was subsequently sentenced to four and a half years imprisonment. Whilst serving this sentence the PPO team were instrumental in his prison re-location in order to facilitate Mark attending and completing a Railtrack programme which he had requested.

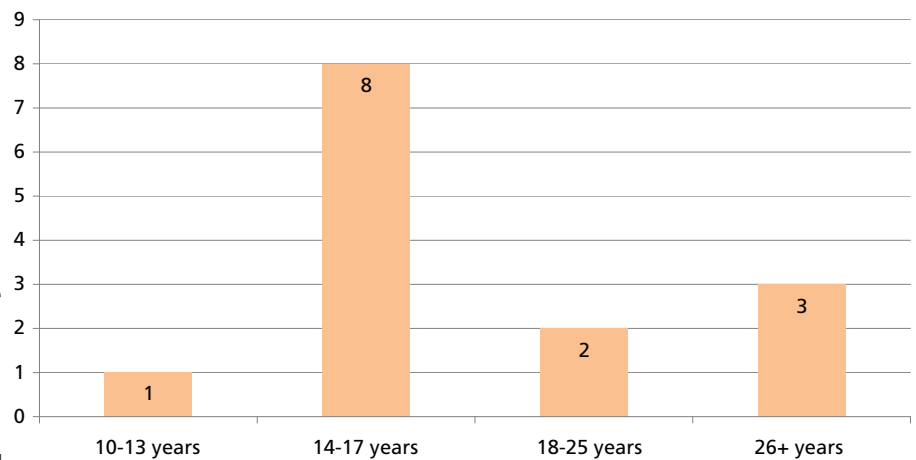
Upon release Mark immediately became active in his search for employment with the view of putting his Railtrack course to use. For the initial four months Mark was unsuccessful securing any form of employment always being put off as the prospective employer required vehicle drivers to get to individual rail sites. This has not deterred Mark as he has passed his driving theory test and is awaiting a driving test date. The IOM team have worked with Mark throughout his endeavours to obtain employment and to assist with his positive progress engaged him on a painting and decorating project where he and another PPO client completed the re-decoration of the Church meeting hall. Mark has since been offered full time employment working on the railway and hopes to take this up within two weeks.

When a young person (under 18), commits a crime their sentence will be managed by the Youth Offending Service (YOS). The YOS is a multi-agency service, aimed at reducing youth crime.

As well as delivering services to young people and their families, the YOS delivers a range of services to victims of youth crime and local communities.

Community residents from across Stockton support the work of the YOS by volunteering

Age when ASBO issued 2010-13



Quote from Victim

“I was still angry at the time but we sat and talked and I got the chance to tell him how badly it has affected us all”

Quote from Victim

“I thought it would be hard ...but I actually felt better”

their time to sit on Youth Offender Panels. These Panels are a ground breaking way of working with young people who commit crime. **If you're interested in becoming a volunteer, please contact Stockton YOS: 01642 527597 or youthoffendingservice@stockton.gov.uk**

Youth Offending Services are the pioneers of restorative justice service in Stockton. It gives victims the opportunity to tell offenders the real impact of their crime, to get answers to their questions and an apology. It holds the offender to account, helps them understand the impact of their behaviour, take responsibility for their behaviour and an opportunity to make amends.

In 11/12, 356 victims were contacted and offered services. Over 600 hours of restorative/reparation activity were undertaken by young people to repair harm to victims/communities, supervised by the YOS.

There are a number of factors that can lead to youth crime and the YOS, and its partners, work to address these.

Quote from Young Person

“Most people don't admit they need help and I've tried that before and it got me nowhere, you need the right help and I've got that from the YOS, and they are there for you, workers actually, genuinely want to see you do good”



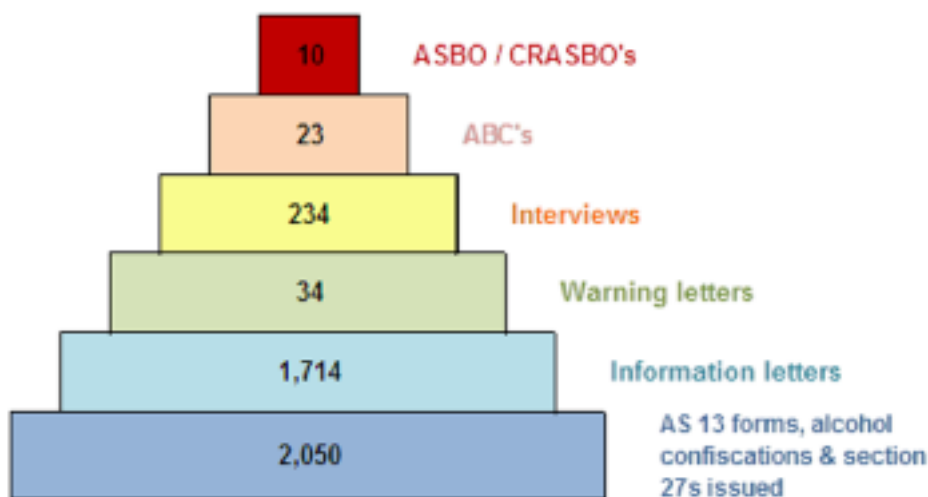
RJ Leaflet

Reducing Anti Social Behaviour

We first started using AS13s in 2006 and since then 11,358 have been issued.

- AS13's are forms issued by uniformed officers when an individual is seen causing anti-social behaviour in an area. As a result all names are passed to the Anti-Social behaviour team, after two or more forms are received for the same person we will write to parents or ask them to come into the police station for an interview to discuss their behaviour.
- Since the beginning of the Neighbourhood Enforcement Service in 2006 over 2000 fines have been issued for various criminal offences against communities (2064) such as littering, dog fouling and dumping waste amongst others.
- If you use an illegal waste carrier to get rid of household waste and its then fly tipped – then you are liable for prosecution and a fine of up to £5,000. Always check a waste carrier's licence and ask for a waste transfer note.

Anti Social Behaviour actions taken in Stockton April 2012 - March 2013

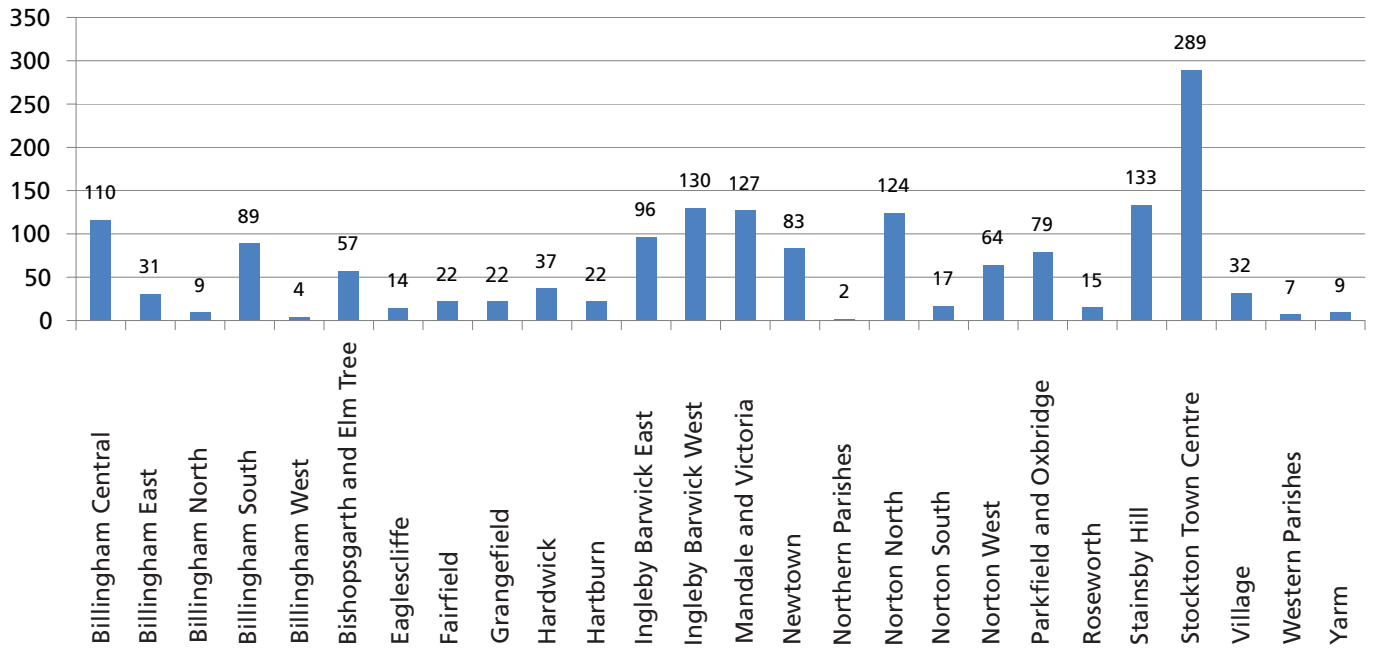


This shows that our lower level actions are having a positive effect in reducing more serious anti social behaviour.

Fact

Neighbourhood Enforcement Officers issued 363 Fixed Penalty Notices in the year 2012/13.

Wards where AS13 forms were issued 2012/13



Billingham Town Council and Ingleby Barwick Town Council both fund additional Neighbourhood Enforcement Services within their respective areas, which has a bearing on the figures shown above.

The table below is taken from the financial year 1st April 2012 to 31st March 2013;

Preventions Service

The Preventions Section of the Community Safety Team work on the preventative and supportive elements to reduce anti-social behaviour, crime and the fear of crime within the borough of Stockton. Our Community Safety Officer has a primary focus on health related issues, such as working to address alcohol and substance misuse and associated crime, working closely to raise awareness on these issues in both educational and non-educational settings. Work in schools is a vital part of our prevention work, please refer to page 33 for more information.

NES Nuisance Vehicles from 1st April 2012 – end of March 2013	
Untaxed Vehicle	448
Dangerous and Obstructing	1,714
Abandoned Vehicles	127
Total	2,289

Working with Landlords

We work closely with Tristar Homes Limited and other registered social landlords and some private sector landlords to reduce the free movement of problem tenants within our borough. This includes offering advice and support on the range of options available to landlords, with a free referencing service that assists landlords in making informed choices when renting their properties. During the last three years the service has:

- Dealt with 7,845 requests for references
- Signed up 211 new members

Support

There are three Officers within the team that carry a role of support, this includes a Victim Witness Support Officer that assists people that have been a victim or witness to ASB. We also work with perpetrators of ASB who are considered to be vulnerable because of their current state of mental health, substance misuse or from a minority group. All support officers conduct regular home visits with residents, providing information, advice, support, and reassurance in relation to the on-going issues they face. They also signpost and refer residents to other agencies that could offer additional support if a specific need is identified.

The table below shows that over the last three years for support only we have helped 415 people, a further 744 have received a security target hardening survey.

Support Offered	2010/11	2011/12	2012/13	Total
Victim Witness	41	67	104	212
Perpetrator/ DA Clients	63	57	49	169
Counselling From? 2013			14	14
Family Support (from January 2013)			20	20
Safe at Home	248	196	300	744

The ASB Victim and Witness Support Officer

Work with people experiencing persistent anti-social behaviour, including those who may be targeted for 'hate crime' for reasons such as their race, sexuality, age, disability, religion, and those who are considered vulnerable for reasons such as age and mental health. This officer also works to identify and monitor repeat callers of anti-social behaviour using the information that comes through the ASB Hotline to match against those who are identified as 'repeats' for the Police. This information is monitored on a monthly basis at local multi-agency meetings. Support is offered where appropriate.

Mediation

In 2012/13 our team introduced some exciting new developments including a mediation service, where officers have been trained to mediate in community cases. Mediation is an impartial process to assist two parties in coming to an agreed outcome that everyone involved is happy with.



Fact

Community Safety Counsellor

In March 2012 one of our support officers graduated as a Counsellor and her role evolved into our Community Safety Counsellor helping 14 clients in the last year, which is in addition to the existing support that is offered to perpetrators of ASB and people living with domestic abuse referred by Tristar Homes. Our Community Safety Counsellor provides a person centred approach in counselling to assist people in finding their way forward. This could be helping them overcome an incident that has taken place, or helping them to get through a difficult time in their life. This approach has been used effectively with talking therapy for both adults and young people who also often benefit from elements of play therapy.

Family Support

To complement and work with the existing Family Intervention Team and the government's Troubled Families' programme, in January 2013 we appointed a Family Support Officer. This Officer works with families that have been referred that could benefit from some short-term intense focussed intervention, to assist them in positively moving forward in their lives and to achieve jointly developed goals.

Restorative Practices

In recent months we have trained and developed officers to use restorative practices to tackle low level anti- social behaviour in the community. This can be an effective way to allow victims (when desired) to meet with those that have caused harm to them in some way (eg through damage to their property) to get a chance to voice their views on how this impacted on their lives, and allows them to ask the person to agree to give something back (where appropriate). This may be in addition to any other enforcement action taken.

Patrols

We also provide uniformed ASB patrols to provide a visual presence in targeted areas which are monitored, to increase feelings of safety with the overall aim of reducing ASB. All our patrolling officers are community safety accredited by Cleveland Police which means they are afforded some designated powers including confiscation of alcohol, authority to take names and addresses and issue AS13 Forms.

Safe at Home

The Council's Community Safety Team in partnership with Cleveland Police co-ordinate the Safe at Home scheme. The scheme provides security target hardening equipment for vulnerable people who are referred into the scheme when they have been a victim of crime or are regarded as likely to become a victim. This scheme aims to assist in making people feel safer whilst remaining in their own home. In the last three years the scheme has helped 744 vulnerable people across the Borough of Stockton.



Reducing Drug Related Offending

Drug Scene Summary

Within our Borough, as in the rest of the country, a minority of people take drugs, which can lead to negative consequences for themselves, their families, and the communities where they live. The latest estimate from the Home Office is that there are around 1,971 problematic drug users in our Borough, which represents about 1% of the overall population of our Borough. Of these, over 1,347 individuals have accessed treatment for their drug use during the past year. The profile of drug use is changing here, as it is nationally, with a reduction in the number of people using heroin. This is more evident among younger drug users, who are more likely to drink high levels of alcohol, and use cannabis or stimulants such as cocaine. Younger adults are also less likely to access treatment to help them address their drug use. Within the Borough there is a range of initiatives in place. Partnership working is key to this approach, with many different organisations working together to find effective solutions to problematic drug use. These organisations include the Police, SBC Community Safety, the Drug and Alcohol Action Team, Probation, the Prison Service, Job Centre Plus, housing providers, SBC Children's Services, and local Drug Treatment Services.

Activities being undertaken to tackle problematic drug use

Problematic drug use (PDU) doesn't only affect the drug user; it has a negative impact on their children and families. Around half of our PDUs are parents, so it's important that appropriate support is given to parents and children to ensure they don't come to any harm. Stockton Recovery Service offer help to maintain and improve relationships between service users and their children.

Families and carers often have a key role in enabling individuals to overcome their drug problem. **Bridges** is the carers' service for families and carers of PDUs helping those affected by someone else's drug use through individually tailored packages of support. Telephone (01642) 605222 for more information.

We have made changes to the local drug treatment system to meet changing trends, and help those who want to become drug free to do so. Our new services are designed to provide help to individuals using any substance including stimulants and legal highs. The Outreach workers can be contacted on (01642) 613358 where workers can confidentially meet individuals who want help at a location that suits them.

Did you know?

Fact

Fact

In the last two years Cleveland Police have had 32 cash forfeiture orders valued at £269,270.35!

The Service also provides:

- harm minimisation offering support and help to reduce the harm caused by drugs.
- Birchtree Practice our specialist prescribing service (01642) 633561.
- ABS the NHS service offering community based specialist treatment for those with alcohol and/or drug problems (01642) 802424.
- STASH is our service for those aged 18 and under who have a problem with drugs and/or alcohol (01642) 607028. There is also a 24/7 Stockton Drug and Alcohol Helpline which anyone who has concerns can ring: 0800 0522050

Did you know?

over the last two years Cleveland Police have had 61 Confiscation Orders valued at £1,368,452.78!

Client ex PPO age 33

"From the age of 13 I started using heroin which led to me committing crime. It escalated quite quickly from shoplifting to thefts, house burglaries, shop burglaries and scrap metal thefts. I ended up being in and out of prison from the age of 15 right through till I was 30. Towards the end of my last sentence just over 2 years ago I was inspired by a guest speaker who the prison got in who himself was an ex offender and ex drug user. On release I engaged with services around Stockton, including Probation, CRI and the Birchtree practice. These helped me to organise my life in stages, breaking it down in to little goals, achieving little goals to get to the big goal really helped me see the progress. One of the goals I achieved was gaining employment this helped me to rebuild my life.

About a year ago after reducing, I came off all prescribed medication. I am now a happy family man. I still receive support from Stockton Recovery Service and feel without the help I received from all the Stockton services I would not have got through this.

Positive Outcomes

Increasing numbers of individuals are managing to overcome their drug problem.

These successes are achieved following support by community treatment services, and sometimes following intensive treatment at residential rehabilitation centres. The progress and outcomes of everyone in drug treatment is monitored regularly using the Treatment Outcomes Profile, and the latest information from this shows treatment is effective in reducing illicit drug use and injecting drug use in particular (which reduces the transmission of blood borne viruses), reducing crime and having a positive impact on general health and housing. The main focus of our drug treatment approach is to work towards successful treatment exits. We currently have strong growth in numbers leaving treatment and the proportion of clients that leave and do not return has improved significantly. In 2011/12, the proportion of those leaving treatment and subsequently returning was 20% and at the end of 2012/13, this had reduced to 15%. This performance puts us in the best 25% nationally for this measure.

As well as support, a key element of partnership working is to disrupt the supply of drugs coming into the Borough. The Police and partners meet regularly to share intelligence on drug use in the Borough.

Did you know?

Did you know that since the beginning of 2011 Stockton Police have visited 69 licensed premises with the drugs dog (Operation Lumberjack) and 45 people have been caught in possession of controlled drugs. All of these people will have received Pubwatch barrings of varying lengths of time.

The cash and assets recovered are then made available to fund community projects and other police operations to target criminals.

Did you know?

Did you know that a cannabis farm was uncovered in Stranton Street, Thornaby resulting in the recovery of in excess of 100 cannabis plants and associated drug producing hardware. A male was arrested at the address and later charged with cannabis production offences.

Did you know?

In 2011 Kenneth Harding was convicted of two offences of Possession with intent to supply heroin and possession of an offensive weapon after a routine stop by officers? When stopped Harding fought with officers and during the struggle a large knife fell from Harding's trousers onto the floor and a substantial quantity of heroin was found on his person. Harding was given a 3.5 year prison sentence.

Did you know?

Did you know that on 11th Feb 2012 a drugs warrant was executed at 47 Yarm Road, Alex Ibbotson, Terry Beaumont, Jane Leonard and Jake Hutchinson were all arrested and £1,254.00 worth of drugs were recovered. Beaumont and Leonard were jailed for 2 and half years, Ibbotson for 3 and half years. Hutchinson was sent to young offender's institution for 2 and a half years conspiracy to supply Class A drugs.



From the horses mouth, Ranger

In our last consultation in 2010 41% of respondents told us that people using/dealing drugs were a problem for them and 38% said alcohol misuse and street drinking was a key concern under anti-social behaviour issues. We work closely with our partners in SBC Public Health to ensure we are coordinating our efforts with SSP focusing on crime and anti-social behaviour caused by alcohol misuse and the DAAT leading on the health side.

Local Strategy to Address the Harm caused by Alcohol

Many people enjoy alcohol and drinking as a socially acceptable pastime, meeting up with friends and colleagues to relax. There is an increasing burden being borne by society due to the negative impact of alcohol misuse and it is a substantial problem for our Borough, as it is in the rest of the North East and the UK. The overall

aim of the 2010-12 strategy was to reduce the:

- negative impact alcohol has upon health and the quality of individuals' lives
- quantity and level of alcohol fuelled crime and anti-social behaviour
- pressures which are placed upon health, social care and criminal justice services

Since the strategy was published a number of significant improvements have been achieved:

- Alcohol related hospital admissions have fallen against an increasing regional and national trend.
- Alcohol fuelled crime has fallen by over 10%. Those arrested for an alcohol related offence are now much more likely to receive an intervention by arrest referral workers whilst in custody. This may be signposting to specialist alcohol services for support.
- Numbers accessing alcohol treatment have increased by 11% in the last year with an increase in female numbers.

A new three year alcohol strategy is being developed based on research findings from a needs assessment completed in 2012, along with available best practice and feedback from consultation events also held in 2012 with service users, carers/families and wider stakeholders.

Social Marketing



We work closely with BALANCE the regional alcohol office to share best practice with our colleagues in the region.

To see the latest campaign material, become a friend of Safer Stockton Partnership on Facebook!

ThinkB4UDrink



2005 saw the launch of our award winning Think B4U Drink alcohol awareness campaign which aims to inform people about safe drinking levels. Since the campaign was last featured within this magazine in 2010, the Think B4U Drink team have worked together to cover many more current issues and relay important messages.

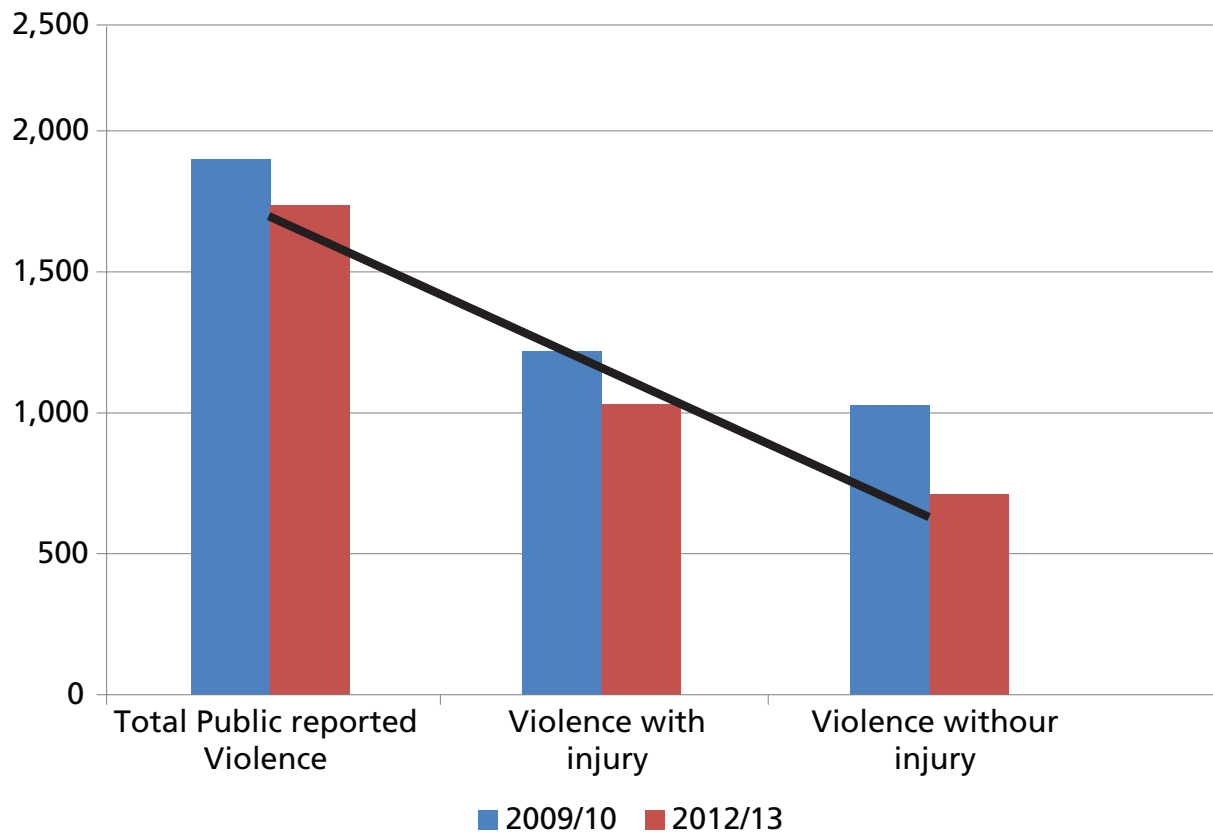
Think B4U Drink have held a campaign relating to the influence alcohol has upon domestic violence, which affects whole families. It has highlighted the importance of remaining safe over the Christmas period when alcohol consumption is generally higher.

The campaign has worked towards changing the social norms and beliefs around alcohol currently held by many young people, throughout the Borough, as a result of the 2010 "You said." project.



Reduce Violence

Levels of violence over 3 year period



Data from North Tees University Hospital A&E department has allowed us to gain a greater understanding of violence linked to the misuse of alcohol and or drug related assaults. This has been utilized alongside police recorded crime which shows a similar picture of those involved in violence, both as victim and offender.

Details captured include information on ages and genders of those assaulted along with the location and date of offence. This is particularly useful when analysing crime and disorder linked to the night time economy. This has aided in the identification of problematic licensed premises, crime hotspots for violence and enables more Officers to be trained in interventions around drugs and alcohol misuse.

Fact

Section 27 notices also continue to be used to combat drunken and in the past 3 years there have been 1169 notices issued mainly in around the town centre areas. Utilising Section 27s allow unruly and potentially dangerous to be dealt with quickly and efficiently and reducing the opportunity of a crime being committed. Being proactive in this way makes our Borough a safer place to live and socialise.

Did you know?

Sine the beginning of 2011 Stockton Police have visited 69 licensed premises with the drugs dog, and as a result 45 people have been caught in possession of controlled drugs. All of these people have received Pub Watch barrings for varying lengths of time.

Pubwatch

The Pub Watch Scheme has over 200 members covering Stockton, Yarm, Billingham and Thornaby. Any member of the public that has been barred from entering any of the Boroughs Pub Watch premises because of their unacceptable, and often criminal behaviour will be monitored by the Anti-Social Behaviour Team. Barrings are made by the members of the Pub Watch scheme, and can last for any duration with up to a lifetime ban.



Did you know?

88% of all assaults with injury during 2012/13 were related to domestic abuse

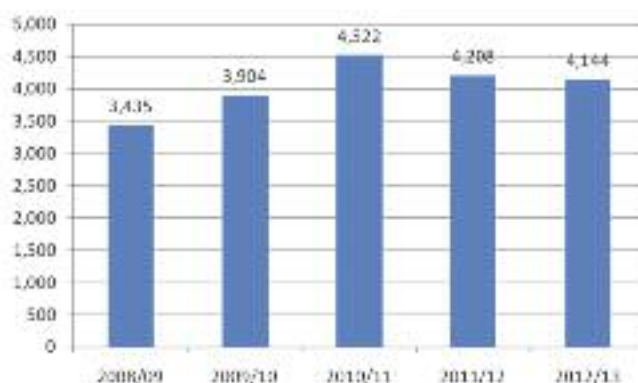
Domestic Abuse

Domestic abuse continues to be a key priority for the Safer Stockton Partnership. It accounted for 38% of all assaults with injury during 2012/13. The numbers of incidents of domestic abuse have remained fairly static over the last 5 years which continues to be a concern:

In 2012/13 there were 4,144 incidents of domestic abuse 47.8% of which involved repeat victims. In total there were 848 arrests. The Domestic Violence Strategy Group is a partnership which oversees the support, enforcement and monitoring of domestic abuse across the borough. The Strategy Group is focussed on reducing the rate of repeat victims over the next 3 years exploring how more support can be offered to victims and their families. The Safer Stockton Partnership also supports a Domestic Abuse Perpetrator programme which is facilitated by Harbour Support Services and aims to help perpetrators:

- Understand what is non-abusive behaviour in an intimate relationship
- Explore the different types of abuse used to control partners
- Identify a range of non-abusive behaviours and how to apply them to their own relationships.

Domestic Abuse Incidents 2008 - 2013



From 31 March 2013, the definition of domestic abuse has been extended to include young people aged 16 and 17 and wording has been added to capture coercive control. A document providing information for local areas on the change to the definition can be found on the Home Office website at the following link.

Guide for Local Areas on the change to the Definition of Domestic Violence and Abuse: www.homeoffice.gov.uk/publications/crime/guide-on-definition-of-dv

In summary the new definition of domestic abuse is:

Any incident or pattern of incidents of controlling, coercive or threatening behaviour, violence or abuse between those aged 16 or over who are or have been intimate partners or family members regardless of gender or sexuality. This can encompass but is not limited to the following types of abuse:

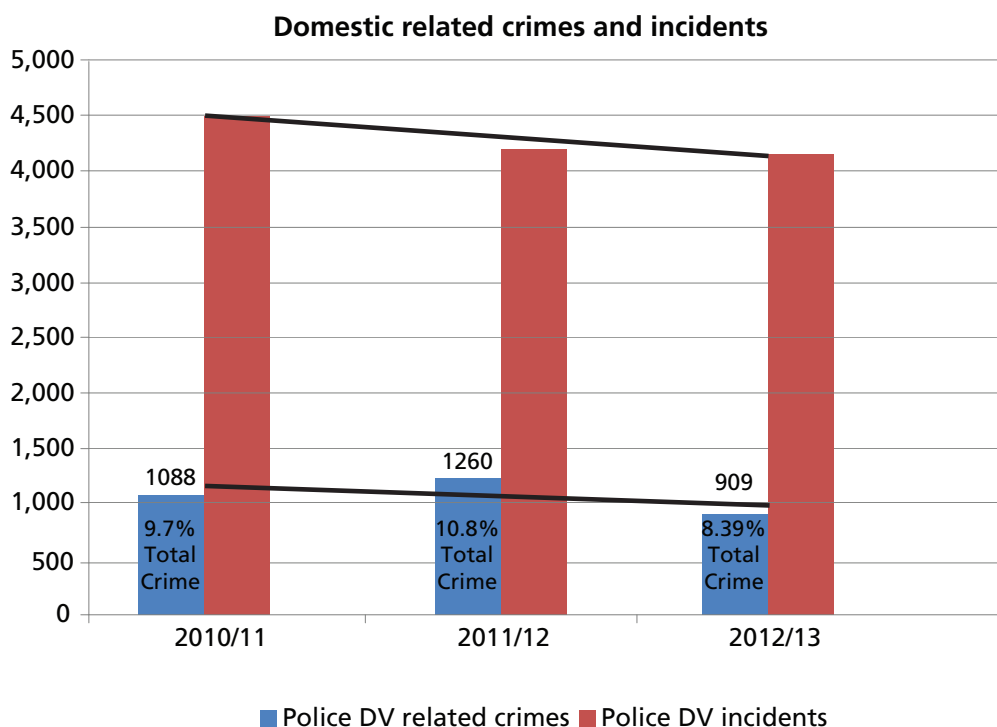
- psychological
- physical
- sexual
- financial
- emotional

Controlling behaviour is: a range of acts designed to make a person subordinate and/or dependent by isolating them from sources of support, exploiting their resources and capacities for personal gain, depriving them of the means needed for independence, resistance and escape and regulating their everyday behaviour.

Coercive behaviour is: an act or a pattern of acts of assault, threats, humiliation and intimidation or other abuse that is used to harm, punish, or frighten their victim.”*

*This definition includes so called ‘honour’ based violence, female genital mutilation (FGM) and forced marriage, and is clear that victims are not confined to one gender or ethnic group.

As a result of the change of definition it is likely that we will continue to see an increase in the number of DV incidents over the forthcoming year. This will be monitored through future performance reports.



Forced Marriages to Become Illegal

What is a forced marriage?

A forced marriage occurs where one or both people do not (or in cases of people with learning or physical disabilities, cannot) consent to the marriage and pressure or abuse is used. The pressure put on people to marry against their will can be physical (including threats, actual physical violence and sexual violence), emotional and psychological (for example, when someone is made to feel like they're bringing shame on their family), or financial (such as taking your wages or not giving you any money).

What is the law currently?

Since 2008, courts in England, Wales and Northern Ireland have been able to issue civil orders, under the Forced Marriage Act, to prevent forced marriage or protect victims. This is an order in a civil court but if it is breached it is punishable with a two-year jail sentence for contempt of court.

Criminalisation?

On 8 June 2012, the Prime Minister announced that the law on forced marriages will be changed and forcing someone to marry will become a criminal offence in England and Wales. Prosecution of forcing someone to marry could result in a sentence as serious as life imprisonment.

Did you know?

The law on forced marriages is changing. Forcing someone to marry will become a criminal offence in England and Wales.

HELP?!?

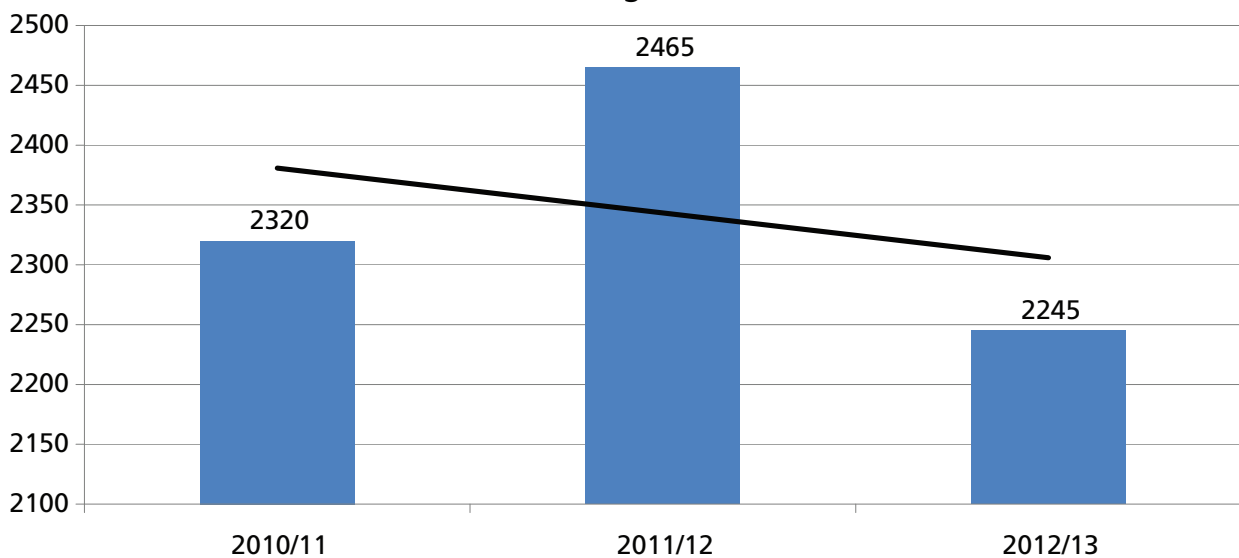
The Choice Helpline is a service ran by the Police and is dedicated to giving advice and assistance to anyone who may be suffering from Honour Based Violence or has been or may be forced into marriage. Helpline staff will put you in touch with national support networks who will advise you in the strictest of confidence.

Reduce Criminal Damage

Detection of criminal damage is difficult because it is often a random act of vandalism committed without witnesses. Over the last three years our detection rate has continued to improve. Detected crimes are those that were 'cleared up' by the police and can be divided into two categories: sanction detections (where

an offender receives a formal sanction) and non-sanction detection (where no further action is taken). The following chart shows that the percentage of damage compared to total crime over the last three years has not changed significantly. Therefore there are still some challenges ahead for the Borough.

Criminal damage levels in Stockton



Criminal Damage has been tackled in the following ways over the last three years:-

- Targeting of hotspot areas for criminal damage
- Raising awareness through lessons in schools to young people on the consequences of committing criminal damage and on how and where to report it.
- Identifying repeat victims to use a multi-agency approach to take further action.
- Strengthening existing work with Registered Social Landlord's to maintain effective processes that are in place to report and deal with criminal damage.

Year	% Total crime
2010/11	21
2011/12	21
2012/13	20

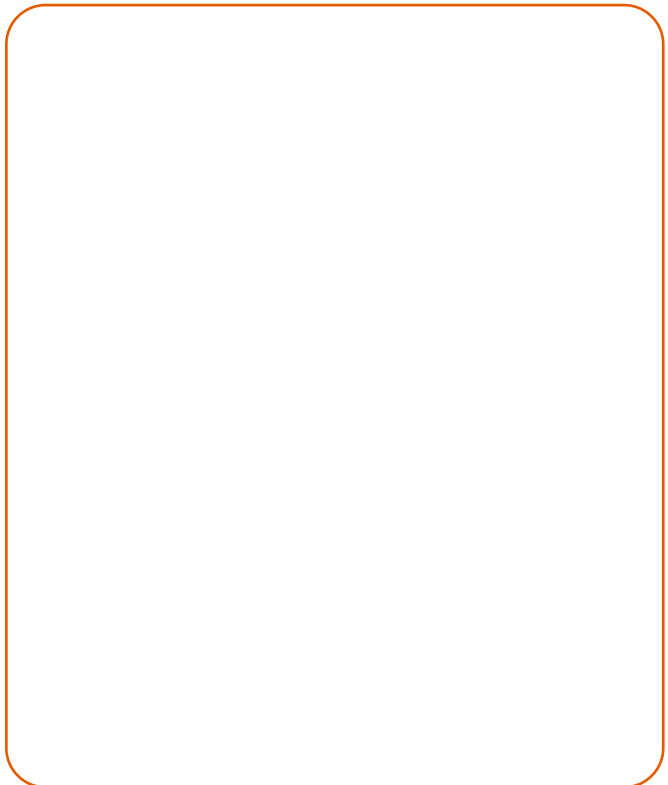
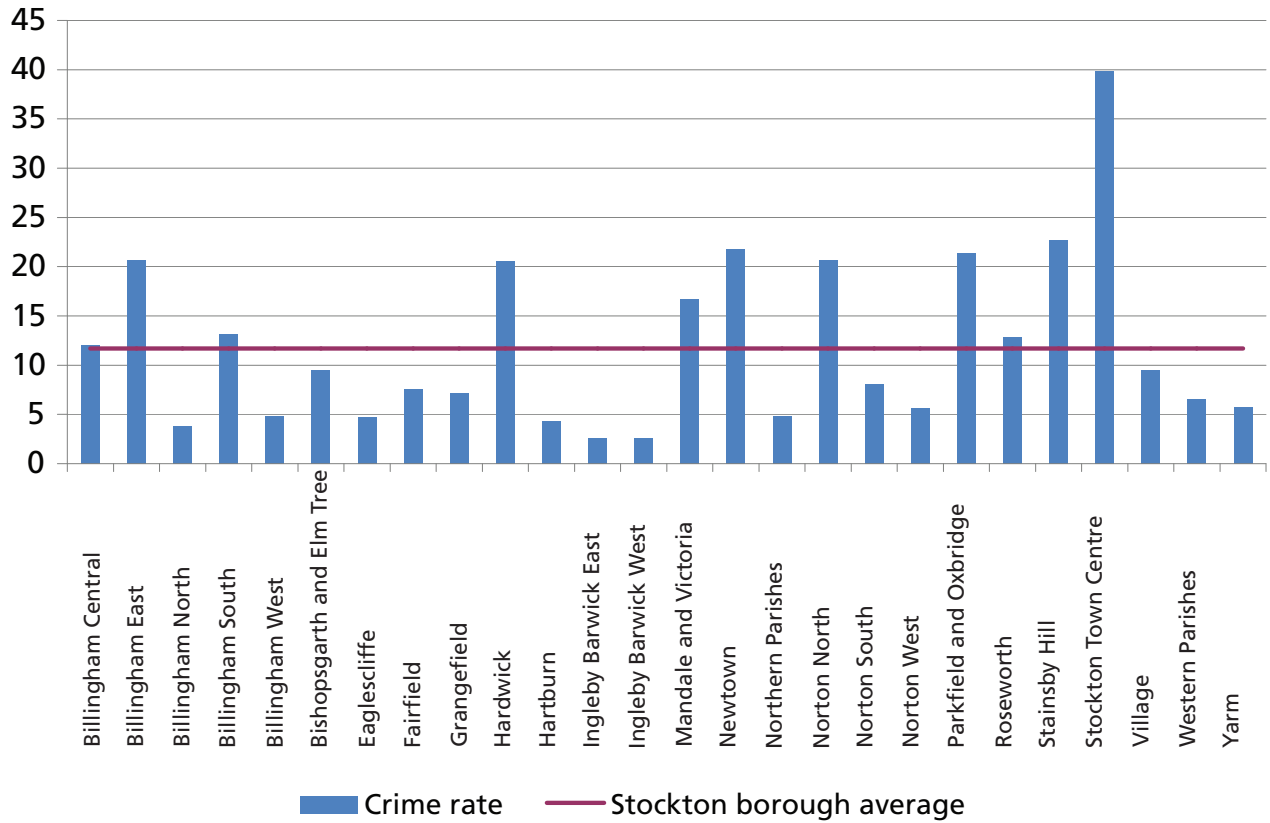
Did you know?

You can receive a Fixed Penalty Notice of up to £80 for criminal damage.

We know we compare favourably with our neighbours but some wards suffer higher levels of criminal damage. Typically those wards that have high levels of anti-social behaviour as well

as deprivation have higher levels of criminal damage. The chart below shows the crime rate based on the number of crimes per 1,000 population

Criminal Damage rates by ward 2012/13



Work in Schools

Young Victims of Crime Lesson

The Young Victims of Crime Lesson is a free one hour lesson offered to all schools across the Stockton borough to pupils in years 6, 7 & 8 (ages 11, 12 and 13). It is delivered as part of their Personal, Social and Health Education programme and aims to raise awareness amongst pupils about becoming a victim or witness of crime and anti-social behaviour.

The lesson explores what it feels like to become a victim, giving advice about who is out there to help and how to get in touch. The lesson also looks at how when young people gather they can inadvertently intimidate and make people feel like victims-even in their own homes!

Alcohol and Anti-Social Behaviour

The Alcohol and Anti-Social Behaviour Lesson is delivered within the latter years of secondary school. It looks at the potential risks involved when drinking alcohol and how drinking alcohol can influence young people to commit ASB. It is an interactive lesson covering the impact alcohol has upon society, crime, anti-social behaviour, health and other forms of risk taking behaviour. The free one hour lesson is usually delivered in Personal, Social and Health Education time, Health days or to pupils on special measures.

Junior Neighbourhood Watch

Junior Neighbourhood Watch is a fun and informative after school club. The scheme is designed to teach the children important safety advice which they can pass on to their families and friends. These lessons are delivered by our emergency services who visit the children on a

regular basis. The children also go out to visit the emergency services at their place of work. This helps them to understand the problems and dangers our teams face while out on duty. Hopefully by introducing these "positive role models" to the children, they will feel happy to approach them for help or advice.

Our focus is to bring back good old community spirit. Children can help make their communities safer and take pride in helping others. Overall we encourage them to be kind and considerate citizens and show them that they can solve problems in their area by working together.

Stay Safe Event

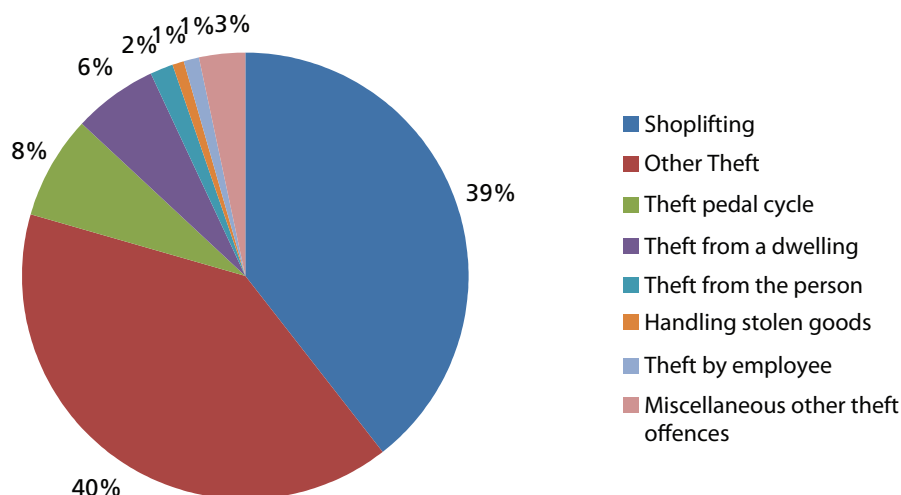
The Stay Safe Event was held during March 2013, at Hardwick Community Centre. Representatives from various organisations of the Safer Stockton Partnership attended, including Cleveland Police, Cleveland Fire Service, the ASB Team, Tristar Homes Ltd, Neighbourhood Enforcement Service, STASH and the Integrated Youth Support Service.

For the full day children from various local Primary Schools visited the community centre and participated in various interactive activities provided by each service, to learn about community safety issues. For example, the ASB team demonstrated the risks involved with drink driving. The children were able to try on the beer goggles and have a go at the drink driving game which brings home the risks of drink driving!

Emerging Issues

Other Theft

Breakdown of other theft offences 2012/13



Metal offences

Accounted for 7% of public reported crime. This includes all offence types where metal taken including burglary, vehicle crime, and thefts. This is a significant reduction compared to previous years.

Scrap Metal Dealers Act

The Scrap Metal Dealers Act 1964 regulates the scrap metal industry and is managed by local authorities. The Act has recently been changed aiming to reduce the number of metal theft offences occurring within the UK. The Home Office stated that approximately 1,000 metal thefts occur each week, costing the country at least £220 million each year. The Act has created a number of changes to ensure that it reflects the twenty-first century scrap metal industry. The changes give local authorities power to refuse to grant or to revoke the licence of 'unsuitable' dealers. Police will now have powers of entry and inspection to tackle illegal trading in metal yards. It bans all scrap metal dealers from trading in cash, removing the 'no questions asked' cash payments which encourage metal thieves and rogue dealers. Scrap metal dealers must now keep more detailed and accurate records of transactions they make, and must verify the identity of those selling metal to them. The Act changes guidelines for the vehicle salvage and scrap metal industries creating a single set of guidelines. The changes require people making an application for a licence, to pay a fee set by their local authority. This will provide local authorities with the funding they need to administer and enforce the regime.

Shoplifting

Continues to fluctuate over the last three years and accounts for 14% of public reported crime with 40% of all shoplifting occurring within Stockton town centre. There are challenges still ahead with this type of crime and the Safer Stockton Partnership will continue its efforts to reduce levels over the forthcoming period. However 75% of all offences are detected for this crime type.

Making an Informed Choice

The table below provides a summary of some crime types. We would like you to complete the survey on the next page to tell us what you think we should treat as a priority and what you think we should not prioritise with the resources that we have available to us.

<p>Alcohol Related Crime and ASB Alcohol misuse is most often linked to violent crime, ASB and criminal damage.</p>	<p>Providing Reassurance Providing accurate information about offending to residents without raising their fear of crime.</p>
<p>Anti Social Behaviour Behaviour that causes people and communities distress, can include many different things. We have given you a number of ASB options on the survey form so that you can tell us what is most important to you.</p>	<p>Reducing Reoffending Working intensely with the small numbers of criminals who repeatedly commit crime.</p>
<p>Arson/Deliberate Fires This is where someone deliberately sets fire to property or land which can cause injury and/or death as well as damage to property.</p>	<p>Restorative Practices A voluntary intervention used in low level ASB to provide an opportunity for both the Victim and the harmer to come together to voice the impact their actions have had on their lives in a hope to gain closure, and prevent further reoccurrence.</p>
<p>Criminal Damage Covers all sorts of deliberate damage to public and private property.</p>	<p>Road Safety/Speeding This can include driving dangerously as well as exceeding the speed limit.</p>
<p>Diverting Young People from Offending & Preventing Re-offending Choose this if you think we should continue with our efforts to divert young people from entering the Criminal Justice System.</p>	<p>Robbery Robbery is a theft where violence has been used, this crime is very low in our Borough.</p>
<p>Domestic Violence This is violence from someone that you have been or are in a relationship with.</p>	<p>Vehicle Crime Includes taking a vehicle, taking something from a vehicle or interfering with a vehicle.</p>
<p>Drug Related Offending Choose this if you think that we need to continue our efforts to break the link between the misuse of drugs and crime/ASB.</p>	<p>Violent Crime Includes a range of crimes where the assailant is someone not in a relationship with the victim. In Stockton the most common is Actual Bodily Harm followed by Assault without Injury.</p>
<p>Dwelling Burglary Having your home broken into and your property stolen, this includes a garage that is attached to your home but not a shed.</p>	<p>Victim/Witness Support Providing extra support for those who have been a victim of crime. This can include increasing security for victims of property crime and/or telephone and one to one support to help victims and witnesses affected by a crime or anti social behaviour</p>
<p>Hate Crime Includes any crime committed against someone because of their race, sexuality, religion or disabilities.</p>	

If you complete the survey on the next page, you may win a prize!

Don't delay. Have Your Say! Return by Friday 25th October 2013

You could win an iPad mini or £100 shopping voucher by completing our survey but don't forget to add your contact details - Good luck!

If you would like some help with this form please contact Claire Sills on (01642) 527616

Name and address (include postcode)

Ward/ward councillor (if known)

For monitoring purposes are you? Male Female

Age range: 16 years and under 17 – 24 25 – 34 35 – 44
45 – 54 55 – 64 65 and over

Ethnic origin: White Mixed Race Black Chinese Asian

Other please state

Do you consider yourself to have a disability? Yes No

The Safer Stockton Partnership will continue to support the work of the Police and Crime Commissioner and the priorities related to these have been highlighted below with an *

**Please tell us what you think should be the top SIX priorities for Crime, and for ASB
(you will tick up to 12 boxes) Please put a ✓ in the**

Please note if you tick all boxes your form cannot be used.

Crime	Should	ASB	Should
Alcohol related crime/ASB		Alcohol misuse	
Anti Social Behaviour		Dog fouling	
Arson/deliberate fires		Dumping rubbish/littering	
Criminal Damage		Graffiti	
*Diverting young people from offending and preventing reoffending		Noise nuisance	
Domestic Violence		People being drunk and rowdy	
Drug related offending		Poor parental responsibility	
Dwelling burglary		Prostitution	
Hate crime		Restorative Practices	
Providing reassurance		Street drinking	
*Reducing re-offending		Threats/verbal abuse	
Road safety/speeding		Throwing missiles	
Robbery		Vandalism	
Vehicle crime		Other:	
Violent crime			
*Victim/Witness Support			
* Retaining & Developing Neighbourhood Policing			
Other:			

Have you read the Crime and Disorder magazine? Yes No

After reading this magazine please tell us do you feel: More safe Less safe No different

Do you feel well informed about what SSP are doing to tackle crime and anti social behaviour?
Yes No

Any other comments?



Scan me to complete online

1



**Community Safety Team
Stockton-on-Tees Borough Council
Stockton Police Station
The Square
STOCKTON-ON-TEES
TS18 1TZ**